



**No  
Pre-Event  
Testing  
needed**

COME JOIN US AT

# Sunday School!

**FOR AGES 4-12**

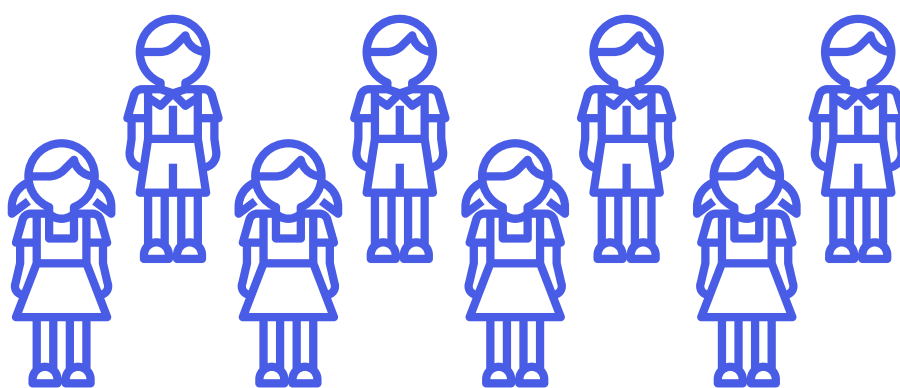
# What to Expect



**Fun Games!**



**Bible Lesson!**



**Small Group Time!**

# How can I book seats for Sunday School?

SMS to 79777

EV<space>code<space>no. of children

Eg. 'EV DL1 2' – 2 children for  
DiscoveryLand, Sat 5pm

## Trinity@Paya Lebar

Sat 5pm, Sun 8.30 & 11am

Ages 4–9: Level 1M, Theatrette 1 & 2

Ages 10–12: Level 4, Classrooms 5–6

Time Slot <50 children per class	Codes
Sat 5pm	DL1
Sun 8.30am	DL2
Sun 11am	DL3

## Trinity@Bukit Batok

Sun 9 & 11am

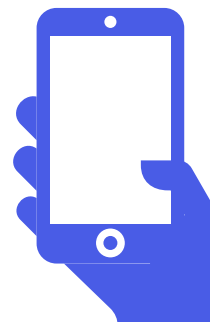
West Mall, Level 5, Cathay Cinema, Hall 1

Time Slot <50 children per class	Codes
Sun 9am	BD1
Sun 11am	BD2

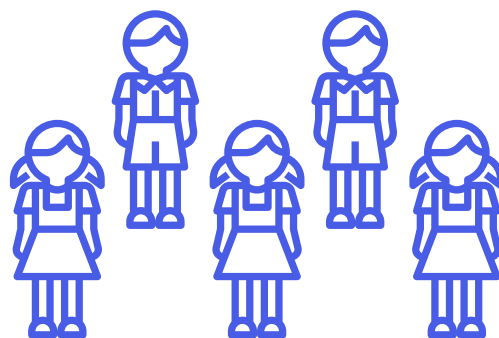
## How can I book seats for Sunday School?



Bookings open at 8pm, 5 days prior. First-come, first-served. (Eg. Mon, 8pm – booking opens for Sat 5pm Sunday School)



Each mobile number can only book one Sunday School session.



Each mobile number can book up to 5 seats.

## How to withdraw a seat booking?

SMS to 79777

EV<space>code<space><-1 to -5>  
(e.g. 'EV DL1 -1'  
to withdraw 1 seat from Sat, 5pm)

For other enquiries, please contact [connect@trinity.sg](mailto:connect@trinity.sg)



# What to Bring



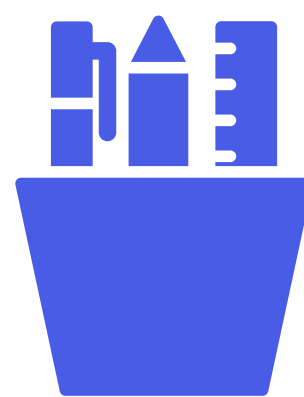
**Bible**



**Waterbottle**



**Journal**



**Stationery**



**Jacket**

**Follow these simple steps when you arrive!**

## **1. Check-in**

Ensure that you have done the following for your child:

- TraceTogether – only Safe Entry
- Take temperature



## **2. Show SMS confirmation**

Show your child's SMS booking confirmation at the DL sign-in counter.



Ensure your child uses the washroom and sanitize their hands before entering.

## **3. Get Zoned!**

Children will be in groups of 5.  
No cross-mingling will be allowed.



# Your child's health matters to us!

## Safety Management Measures:

1. All our volunteers are vaccinated and have gone through Fast and Easy Testing (FET) before serving.
2. No sharing of personal items.
3. Fixed groups of 5 with no cross-mingling.
4. Frequent cleaning of high-touch surfaces.
5. Any child with flu-like symptoms will be brought to another room immediately for their parent/guardian to pick them up.

## For children in nursery

Click [here](#) for more details!

To contact us:  
[childrenministry@trinity.sg](mailto:childrenministry@trinity.sg)

For more information:  
<https://linktr.ee/trinity.discoveryland>



TRINITY  
CHRISTIAN CENTRE